

PRODUCT DEVELOPED by  
**INEXA-TDA**



INGENIERIA Y EXPORTACIÓN  
DE TECNOLOGÍA S.L.  
c/ Viera y Clavijo, 26  
35002, Las Palmas de G.C.  
Canary Islands, SPAIN

Ask for free demo video in:

info@inexa-tda.com  
Tel.: +34 928 45 70 81  
Fax: +34 928 45 70 88

Other services offered  
by **INEXA-TDA**

- R.O. Desalination.
- Filtration Technology.
- Energy efficiency projects.
- Engineering Services.

[www.inexa-tda.com](http://www.inexa-tda.com)



Distributor / Commercial Agent



**SEA / BRACKISHWATER  
INTAKE & DESALINATION**



- High Quality Intake Water.
- No Need Of Well Drilling.
- Easy Maintenance.
- Automatic Start / Stop.
- Coupled With Renewable Energy Source.

[www.ingeniatec.com](http://www.ingeniatec.com)

## WATER INTAKE SYSTEM (patent pending)

Ideal for surface waters: rivers, lakes, beaches,...



Water is absorbed by capillary action, through special belts buried in the soil.

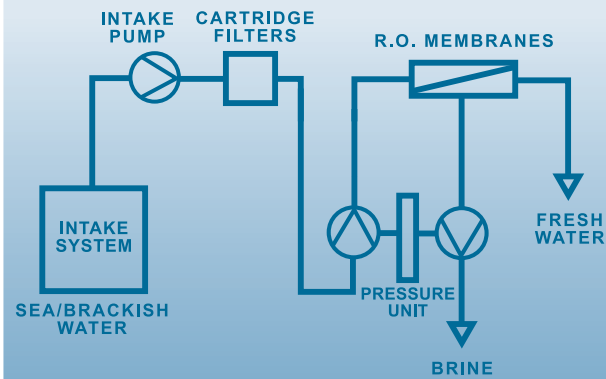


## High Quality Intake Water for the R.O. Desalination Plant

- Low biofouling
- Low turbidity



## FLOW DIAGRAM



## DESIGN TABLE (Seawater Desalination)

INTAKE SYSTEM SURFACE (m <sup>2</sup> )*	PLANT CAPACITY (m <sup>3</sup> /d)**	RECOVERY %	MAXIMUM ABSORBED POWER (kW)***
27	7.2	29	2.83
36	12.5	32	3.91
54	19.7	32	5.39
90	36	43	7.26
150	72	43	14.52

\* Taken as an average. These values might change depending on the characteristics of the soil.

\*\* Other plant capacities are possible under request.

\*\*\* Distance between intake and RO plant < 50m.

+ More information in [www.ingeniatec.com](http://www.ingeniatec.com)

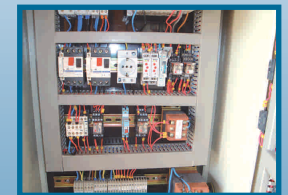
## R.O. DESALINATION PLANT

### Energy Recovery System



7m<sup>3</sup>/d  
Pressure Unit

### Automatic Start / Stop



### Easy Maintenance.

(No electronic devices, no chemical addition)

Coupled with renewable energy source diesel generator.

Supplied in containers.  
(Optional)

